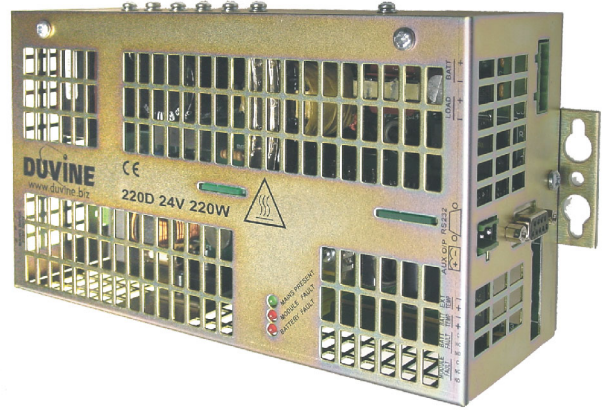


12V **24V** **48V** Power Module **220D**

220 Watt Power Supply/Charger:

- Active battery monitoring and test
- Remote control via optional RS232 Port
- Optional auxiliary output (5,12 or 15V)
- Fan blown option - higher output power or greater than +60°C operation
- Input voltage from 85 - 264VAC
- Power Factor Correction
- Panel/Chassis or optional Din rail mount



Electrical

Input Voltage: 230 Volt (85-264) single phase
 Input Frequency: 47-63 Hz
 Input Current: 3.1 Amp maximum , sinusoidal
 Inrush <8 Amp peak

Main o/p range, current limit, power & efficiency

- 12V** 12 - 15 Volt, 17 Amp, 200 Watt, 80%.
- 24V** 24 - 30 Volt, 9 Amp, 220 Watt, 85%.
- 48V** 48 - 60 Volt, 4.6 Amp, 220 Watt, 90%.

Regulation: Load and line <100 mV
 *Charging voltage is varied with temperature to extend battery life.

Output Ripple: <50 mV peak to peak

Optional auxiliary outputs

Choose one of the following standard upgrades
 •5 Volt/6 Amp •12 Volt/3 Amp •15 Volt/2 Amp

This output is isolated so may be connected to give a -ve or +ve supply relative to the main output.

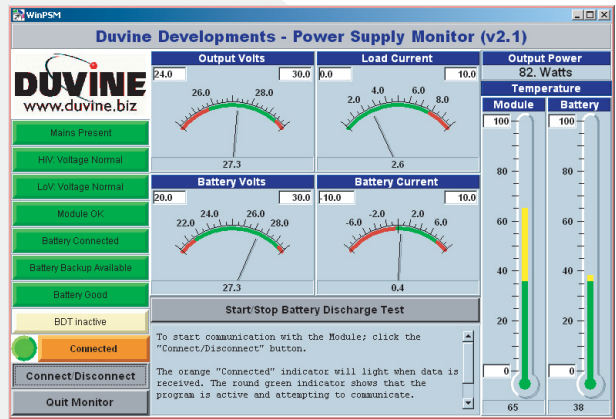
Other voltages can be supplied on a bespoke design basis

Protection

Input: Internal fuse.
 Battery: Incorrect voltage or polarity
 Deep discharge via load disconnect
 Temperature compensation option*
 Internal fuse
 AC: MOV surge protection
 DC fault: Output overvoltage shutdown
 Output short circuit protection
 Over temperature: Output power limiting

Monitoring & Remote Control

Monitoring and control is provided via the RS232/485 port, a modem as required, and the Duvine WinPSM monitoring software as displayed below.



Battery Testing

Availability: Continuous monitoring of battery condition.
 Capacity: Optional safe discharge test to determine available battery capacity

Environmental

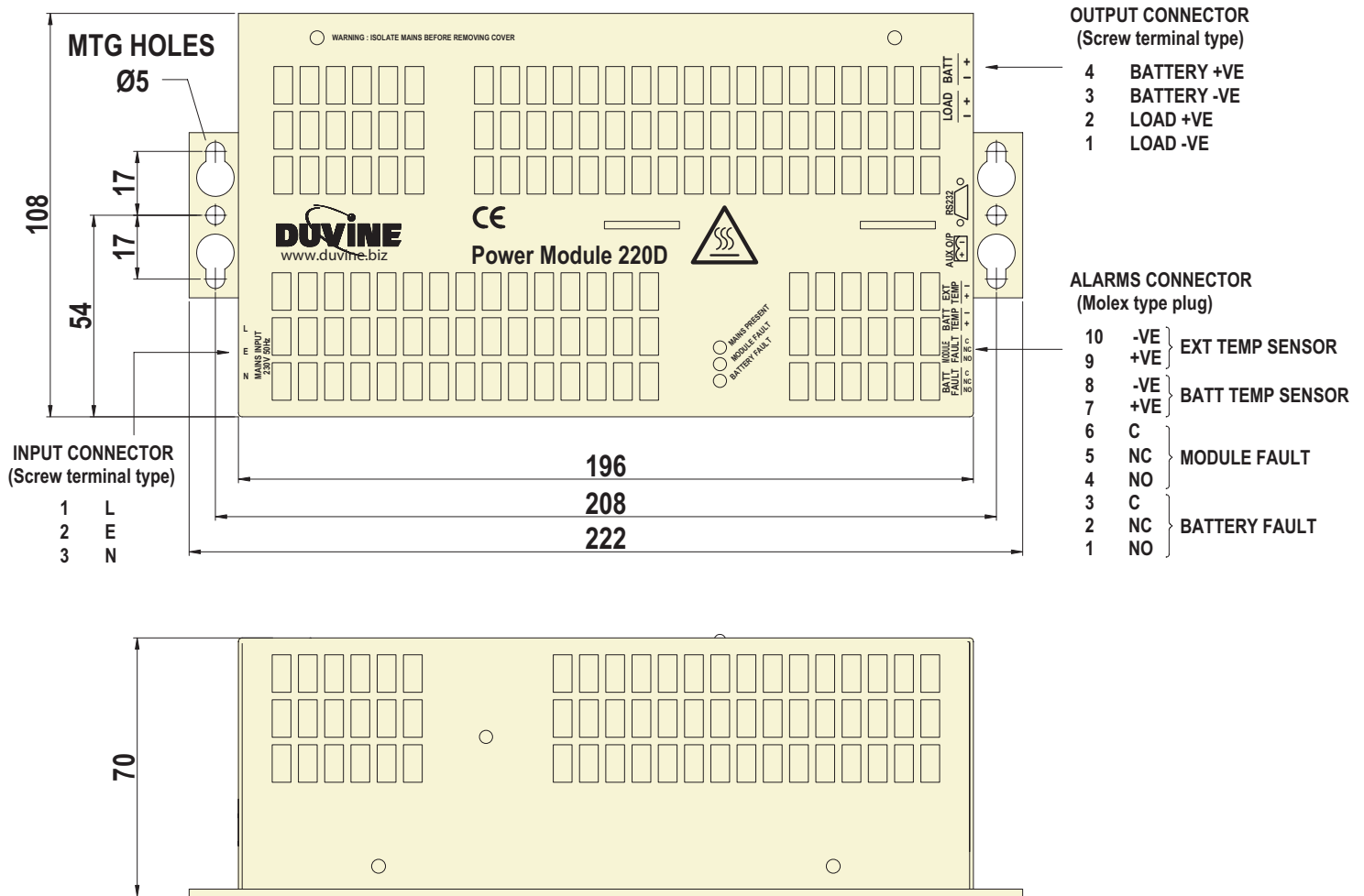
Temperature: -15 to +60°C operational
 -25 to +60°C transport/storage
 Relative humidity: 0 to 90% non condensing
 Altitude: to 1500 metres
 Safety: **CE** EN60950
 EMC: **CE** EN50081-1 & EN50082-2

Physical

Size: 222 x 108 x 70mm (LxWxH)
 Weight: < 0.85kg
 Level of Protection: IP20



Power Module **220D** 220 Watt Power Supply/Charger



Options and upgrades

- Auxiliary output
Standard dc options are 5V 6A, 12V 3A or 15V 2A
Bespoke designs can also be provided. Part design charge or volume contract
- Fan blown option
Provides up to 290 Watt output power
or allows, standard power output, operation above +60°C. Please refer to technical support for advice re your specific application.
- RS232 port and software
Interrogate the **220D** on your PC locally or remotely via modem
Monitor alarm conditions, adjust settings, monitor internal or external temperature
Conduct safe battery capacity test
- Battery temperature sensor
Maximise battery life with temperature compensation. In order to prevent unnecessary battery gassing and the resultant permanent loss of battery capacity, the **220D** continuously monitors the battery operating temperature and sets its output level to the optimum charging voltage.
- Conformal coating

